

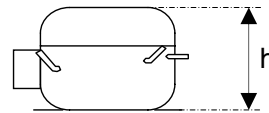
OPERATION:

Application:	L.B.P.	Max. Ambient Temp:	43°C
Refrigerant:	R134a	(1) Max. Steady Discharge Temp:	120°C
Operation:	Capillary	(1,2) Max. Peak Discharge Temp:	135°C
Cooling:	Static	Max. Steady Condensing Temp:	60°C
		(2) Max. Peak Condensing Temp:	70°C
		Max. Winding Temp:	130°C
		Max. Impurities:	30 mg
		Max.Total Compressor Water Content:	100 mg

COMPRESSOR:

Displacement:	7.52 cc	Oil Type:	Ester
Bore:	23.6 mm	(4) Viscosity:	15 cSt
Stroke:	17.2 mm	Suction Muffler:	Semi-direct

(3) Net Wt:	8.6 kg
Case Size:	2 (h = 169.5 mm)
Oil Charge:	180 cc



ELECTRICAL:

Power Supply:	220 - 240V	Motor Type:	RSIR / RSCR *
Voltage Limits:	187 - 264V	Locked Rotor Current:	12.5 / 7.0 A**
Frequency:	50 Hz		
Phase:	1 ph		

Main Winding Resistance at 25°C:	9.5 Ω
Start Winding Resistance at 25°C:	20.8 Ω

* With Optional Run Capacitor

** Maximum current / Measured after 4 seconds

(1) Measured 5cm. from the shell with insulated thermocouples

(2) For transient conditions during 'Pull Down'

(3) Net weight is with oil but without electrics

(4) Measured at 40°C

For rated performance,

the suction line must be connected to the stub marked 'AS' on the attached drawing.

ELECTRICAL COMPONENTS:

ZEM Starting Device:	PTC- 8100		
(1) ZEM Starting Device:	PTC - 7100D7		
ZEM PTC Resistance:	14 Ω		
'Combo' PTC Resistance:	14 Ω	ECC Starting Device:	K 100-xx
Run Capacitor:	4.0 μF		

-xx Protector short code

PROTECTORS:

PROTECTORS	BDG ^¾	Combo	Electrica ^¾	Texas 4TM
Type	AE 11 FU x	C2-319 NFBYY xx	T 0490 / kk	4TM 319 NFBYY xx
Open °C	115 - 125 °C	115 - 125 °C	125 - 135 °C	115 - 125 °C
Close °C	71 - 53 °C	70 - 52 °C	70 - 55 °C	70 - 52 °C
U.T.C	2.80 A 70 °C	2.74 A 70 °C	2.67 A 70 °C	2.74 A 70 °C
Time Check Current	9.40 A	12.0 A (5-15s)	9.40 A	12.0 A (5-15s)
Max. Current	20.0 A	24.8 A (2s max.)	18.0 A	24.8 A (2s max.)
Code (if any)	FA	2C	AD or CH	6P

Alt. protectors: AF 11 FU x
 D7

*BDG 'x' Codes: 6 for terminal boards Mod.89,90
8 for terminal board Mod.91
4 for UH protector with 6.3mm fast-on
5 for UH protector with M3.5 screw*

*Electrica 'kk' Codes: 05 for terminal boards Mod.89,90
07 for terminal board Mod.91
C5 for UH protector with M3.5 screw
C6 for UH protector with 6.3mm fast-on*

Texas 4TM 'xx' Codes: .. for different contact versions

Combo 'xx' Codes: .. for different contact versions

The combined PTC and 4TM protector 'COMBO' is not for use with UH terminal boards.

4TM protectors are for use with UH and ECC terminal boards only.

Protectors with M 3.5 screws can be used on UH electric housings type SP-1454 (with connection board)

and SP-1821 (without connection board). See drawings ELECTRICAL ASSEMBLY (FOR UH) number FTC15;16;17;18.

^¾ protectors with 6.3mm fast-on can only be used on UH electric housing type SP-1821 (without connection board).



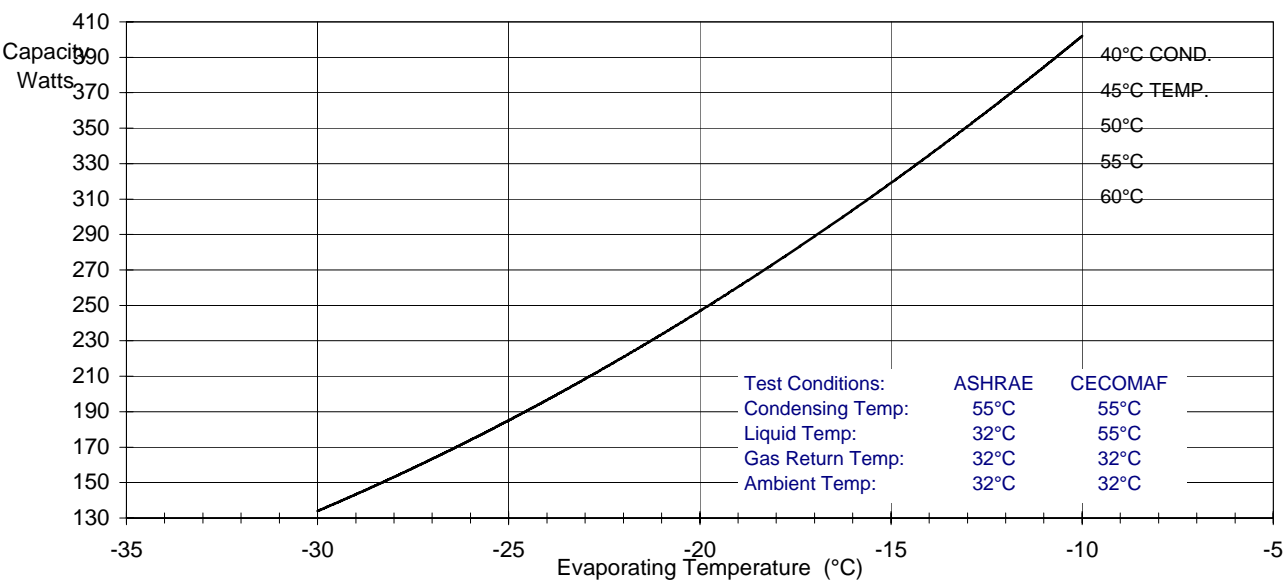
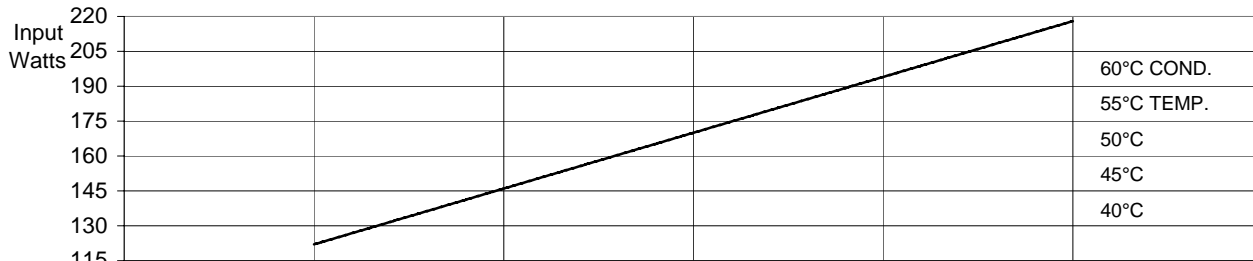
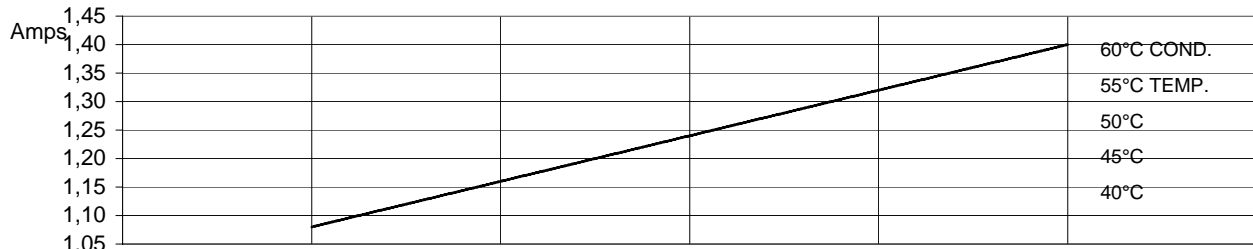
GVY75AA

PRODUCT SPECIFICATION

PERFORMANCE:

(Graphs are at ASHRAE conditions)

220V 50Hz Without run capacitor



			Evaporating Temperature °C	-30	-25	-23,3	-20	-15	-10
<u>ASHRAE:</u>	Capacity	W		134	185	205	247	319	402
	C.o.P.	W / W		1,10	1,27	1,33	1,45	1,64	1,84
<u>CECOMAF:</u>	Capacity	W		109	150		201	260	327
	C.o.P.	W / W		0,89	1,02		1,18	1,34	1,50
	Input Power	W		122	146	154	170	194	218
	Current	A		1,08	1,16	1,19	1,24	1,32	1,40



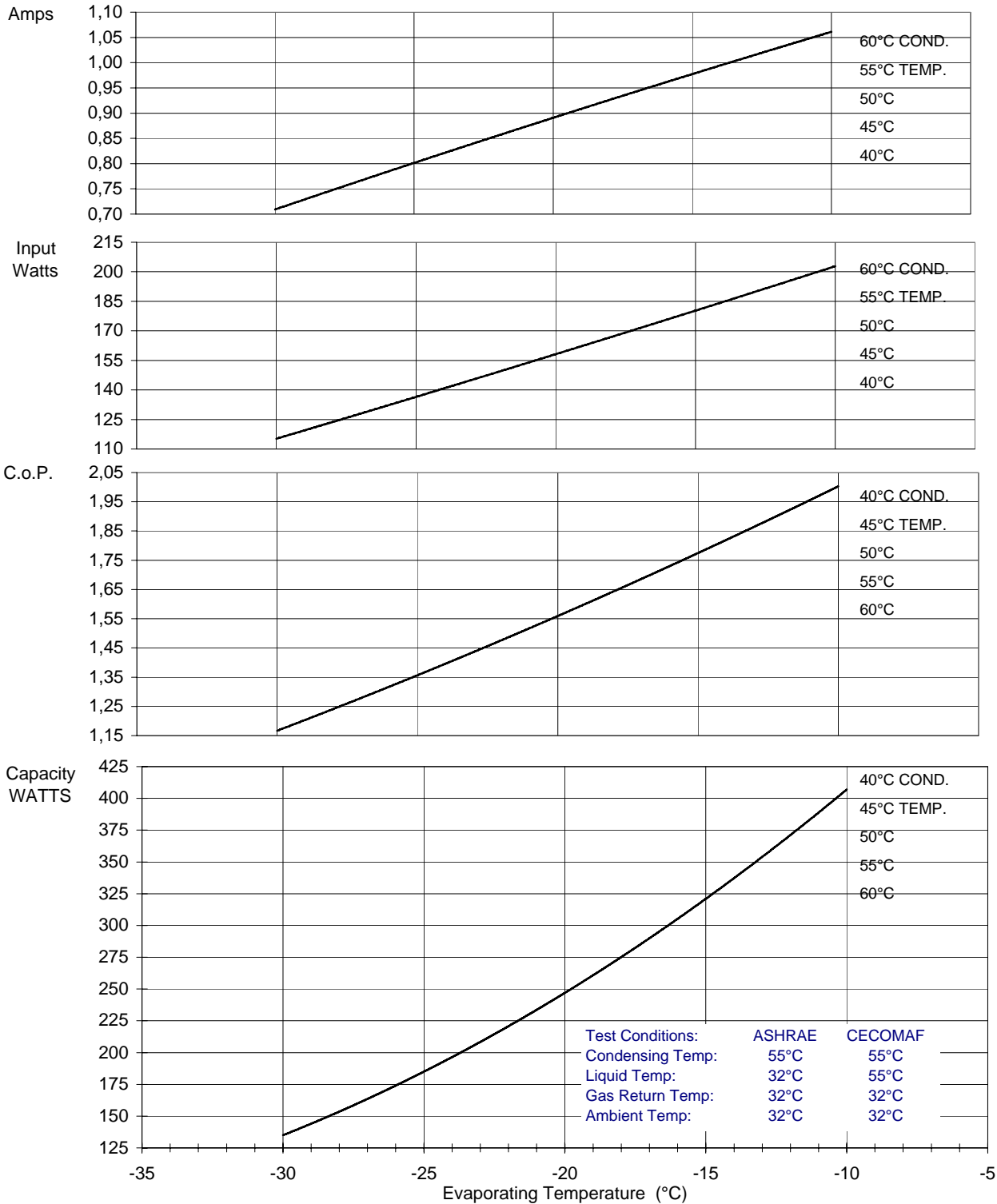
GVY75AA

PRODUCT SPECIFICATION

PERFORMANCE:

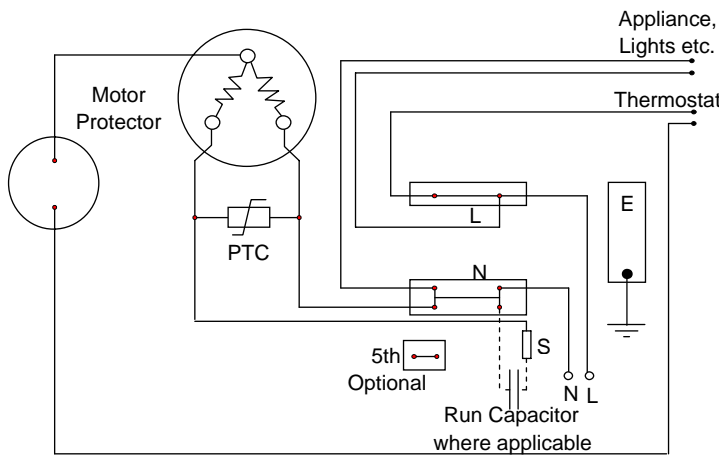
(Graphs are at ASHRAE conditions)

220V 50Hz With run capacitor

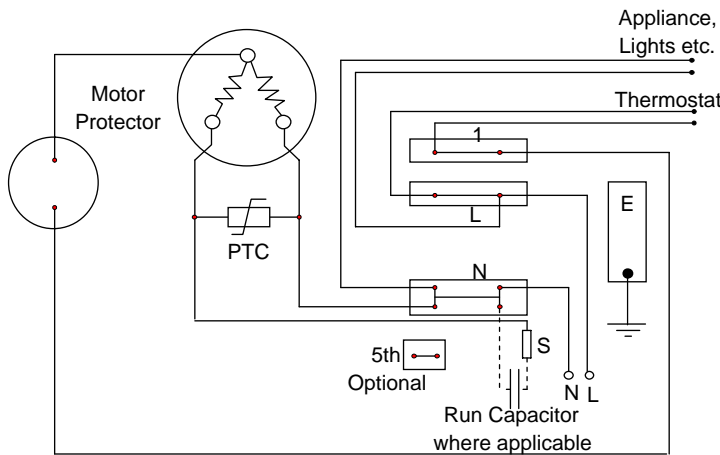


	Evaporating Temperature °C	-30	-25	-23,3	-20	-15	-10
ASHRAE:	Capacity W	135	185	205	247	321	407
	C.o.P. W / W	1,17	1,35	1,42	1,56	1,78	2,00
CECOMAF:	Capacity W	110	150		201	262	331
	C.o.P. W / W	0,96	1,09		1,27	1,46	1,63
	Input Power W	115	137	144	158	180	203
	Current A	0,71	0,80	0,83	0,89	0,98	1,06

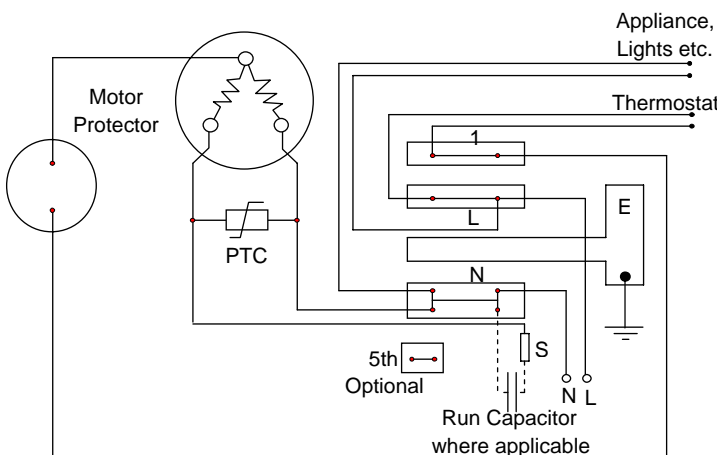
Circuit Diagram for ECC Terminal Board Standard Version



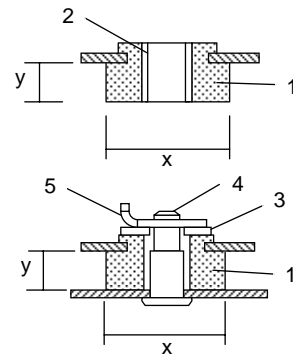
Circuit Diagram for ECC Terminal Board Frontal Version



Circuit Diagram for ECC Terminal Board Rast 5 Version



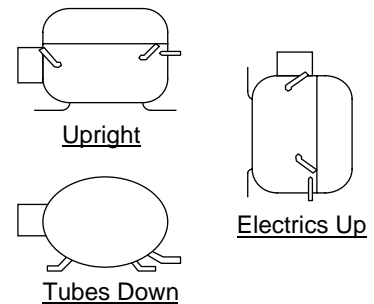
Mounting Accessories



x = 24 or 26 or 28.6mm
y = 9mm or 10.3mm
Other sizes available

1. Rubber grommet
2. Sleeve
3. Washer
4. Steel pin
5. Clip

Recommended Transport Positions when fitted into appliances



Compressor Label

